



Opti-mize HE Pro 3D

3D Measurement Videoscope

✓ High definition

✓ Easy to operate

✓ 3D measurement

✓ Stable and reliable



HD · Intelligence

High definition display image



- 6.5 inch high-definition touch screen with professional customized lenses.
- Million pixel and sensitivity image sensor, ensuring clear and delicate images.
- The binocular lens adopts a 720P high-definition solution, high sensitivity CMOS sensor, and automatic light sensitivity.



Engine
Higher resolution displays fine defects



Pipeline
Excellent and strong light to support view in large cavity



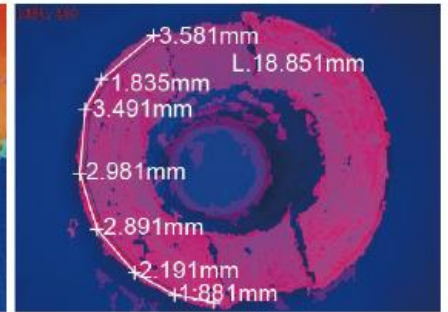
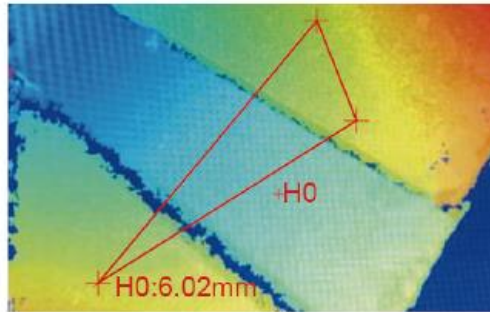
Corrosive/abrasive materials
True color reproduction



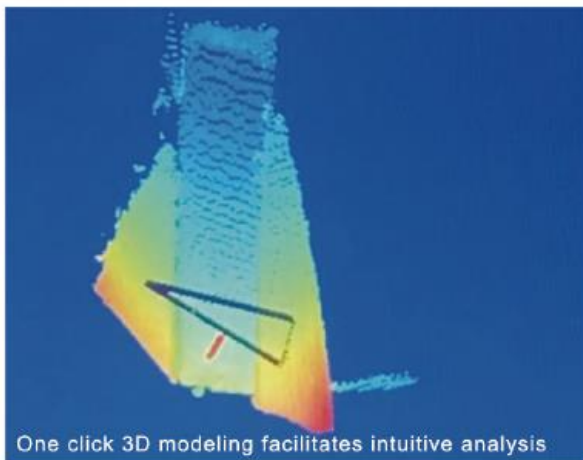
Welding
Advanced noise reduction performance improves real-time image quality

Powerful measurement function

- High definition 3D scanning measurement can perform precise 3D measurements.
- It can display object distance and measure dimensions in real-time, allowing for more intuitive and accurate detection.
- The rich 3D depth cloud map provides a reliable guarantee for accurate measurement, and cracks as fine as silk threads can be accurately displayed and measured.



Intelligent operating system



Negative enhancement display



Picture in Picture screen view

- One click 3D modeling
- Negative film comparison display
- Real-time image picture - in - picture display
- Desktop Collection Common Function Icons
- Exclusive watermark addition

360 ° all-round joystick control



Flexible articulation through all-round adjustment of the joystick

Modular design



Modular design allows for quick replacement of probes

Exquisite exterior design



Anti drop and shockproof bordure

Touch sensitive HD highlight screen

The button position is suitable for finger operation

Anti slip handheld cushion

Large capacity rechargeable lithium battery with long working hour

Support for direction of view switching



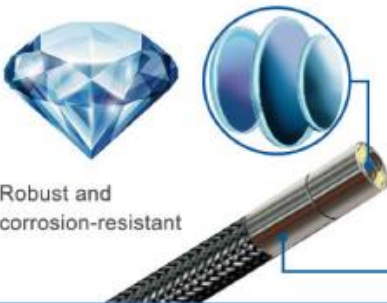
○ Can switch direction of view with one click

HDMI output

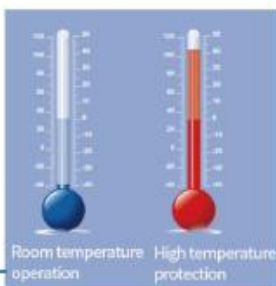


• HDMI • USB3.0

Sapphire lens high-precision probe



Robust and corrosion-resistant



Room temperature operation High temperature protection

Ingress protection standards



IP65

Applications



Aerospace



Aircraft engine



Aircraft manufacturing

Technical parameters

Camera diameter	3.9mm	6.0mm	LCD size	6.5 inches touch screen
Pixels	500,000	1,000,000	Controller size	351*163*122
DOF	5-50mm	8mm-80mm	Controller interface	HDMI interface, USB3.0 interface
FOV	120°	120°	System memory	Built-in 4GB standard flash memory
Housing material	Titanium alloy	Titanium alloy	Memory medium	128GB SSD
Cable length	2.0M/ 3.0M	2.0M/3.5M/6M	Battery capacity and working hour	11.1V 7000mah ≥3 horas
Cable surface layer	Tungsten braided		Operation system	Embedded operation system
Bending angle	>120°		Image control	Brightness, Saturation, Contrast, Hue
Control mode	Motor driven joystick control		Temperature warning	Over temperature warning
Type of light	LED		Special image processing	Negative
Lighting Life	100,000 hours		Still image record	Resolution 1280x720 format JPEG ,BMP
Temperature sensing	Build-in temperature sensor		Video recording	Resolution 1280x720 format AVI ,ASF
DOV	0 or 90°		Stereo measurement	Including point-to-point,point-to-line, point-to-surface, curve measuremer, etc. The measurement accuracy is 0.1~0.2mm, and the deviation is 2~5%
Camera lock/Pause	Available		Data output	Support USB drive export